



125 Campaign

Breaking the cycle of
poor health and poverty.

Bridging the gap
in health inequalities.

125
YEARS
1898 2023

LSTM
LIVERPOOL SCHOOL
OF TROPICAL MEDICINE



The Liverpool School of Tropical Medicine 125 Campaign

What is it and why?

The first institute of its kind in the world, LSTM is celebrating its 125 years of existence with a major initiative which recognises the lessons of the COVID-19 pandemic. This revealed the inequalities of global health systems, which in disadvantaged communities impair social and economic development, but also illustrated starkly that diseases know no boundaries.

To achieve global health security we need to strengthen health systems worldwide in countries rich and poor and to bridge those health inequalities. A highly trained health workforce, equipped and supported with cutting-edge research, technology and surveillance is critical to building resilience and to address major challenges such as emerging infections, pandemics, and resistance through global efforts.

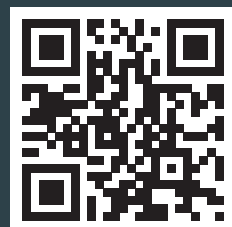
Our 125 Anniversary Campaign aims to do this by investing in brilliant people and partnerships to bridge the gap in health and scientific capacity around the world.

What's next?

Our £25m campaign tackles 'levelling-up' on a global scale.

“ We want to take LSTM from a UK organisation which operates overseas, to a truly global organisation, with partnership at its heart, headquartered in Liverpool. ”

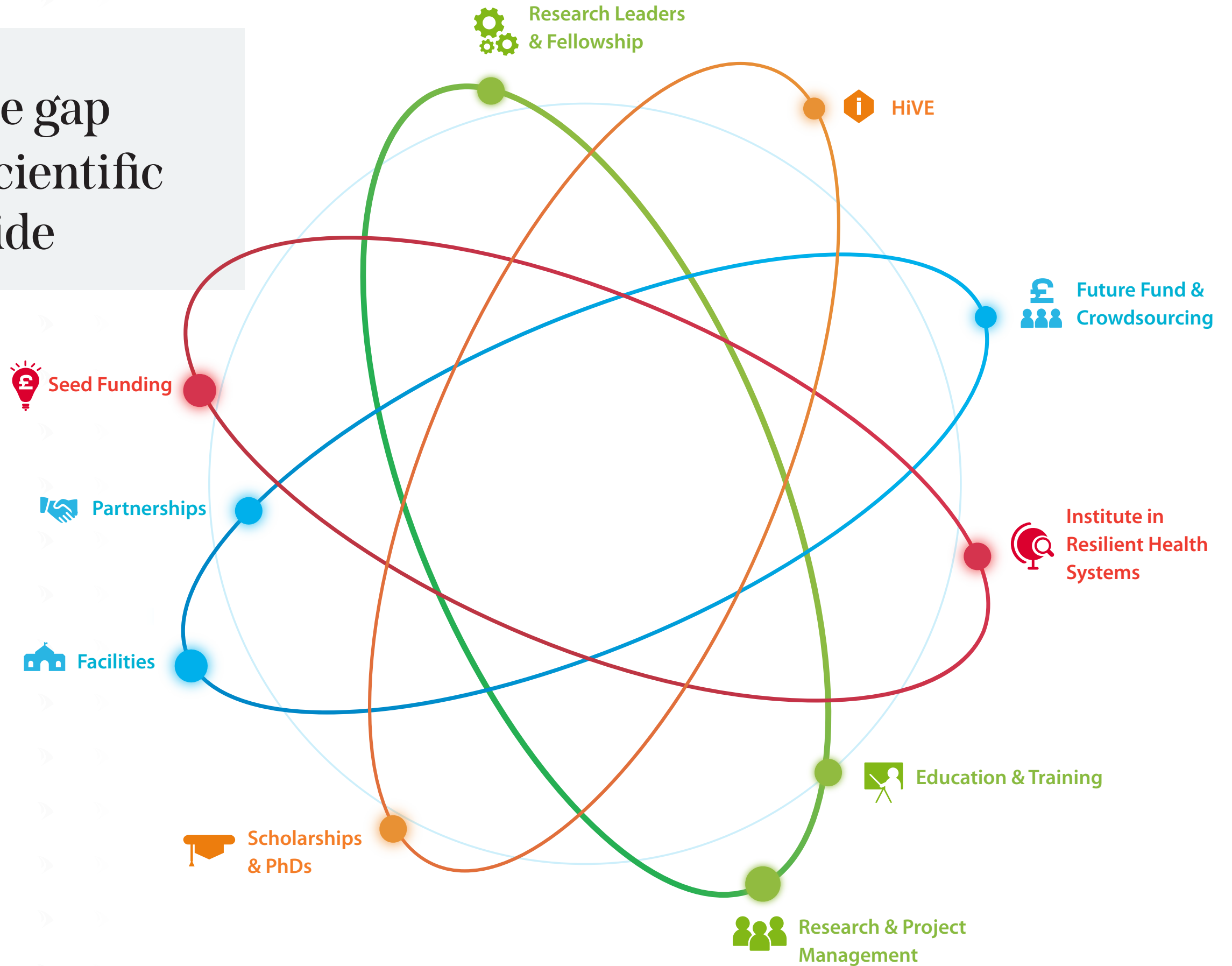
Professor David Lalloo,
LSTM Director



Scan to find
out more



[Bridging] the gap in research and scientific capacity, worldwide



Connections
Opportunities
Knowledge
Capacity

[Bridging] Connections

Our work and impact thrives on partnerships. Our 125 Campaign will support the development of a unique research ecosystem with partnership at its heart. We are passionate that researchers in communities with the greatest risk and exposure to major health threats have the agency and advocacy to tackle them.

We will grow and diversify our global network to create an equitable, supportive and collaborative research community. Our training and innovation offer will also reflect this global perspective. Investment in physical and digital infrastructure and catalyst seed corn funding will enable seamless collaboration across borders and disciplines. Our virtual incubator, HIVE (Health Innovation in a Virtual Environment), connects researchers and clinicians with entrepreneurs, industry and advisors to support the development of exciting new ideas for health.

Investing in our research and training infrastructure

Growing and diversifying our global research ecosystem

“Partnerships is at the heart of everything we do at LSTM. Thanks to existing networks, we were able to save lives during the COVID-19 pandemic through the Bump it Forward campaign by distributing PPE to frontline healthcare workers across Africa who needed whilst they awaited for the COVID vaccine to reach them.”

Lucy Nyaga, Kenya Country Director, LSTM

Community coach from Malawi engaging young males with health messaging through the Health Goals Malawi project: a partnership with LFC Foundation.



[Creating] Opportunities

Our scholarships programme exemplifies our core values: supporting under-resourced communities by building skills and capacity through world-class training and education. Our graduates go on to achieve remarkable things; we want to support more of them by creating an additional 125 Anniversary Scholarships.

We recognise the challenges that early-career researchers face – particularly those in low- and middle-income countries.

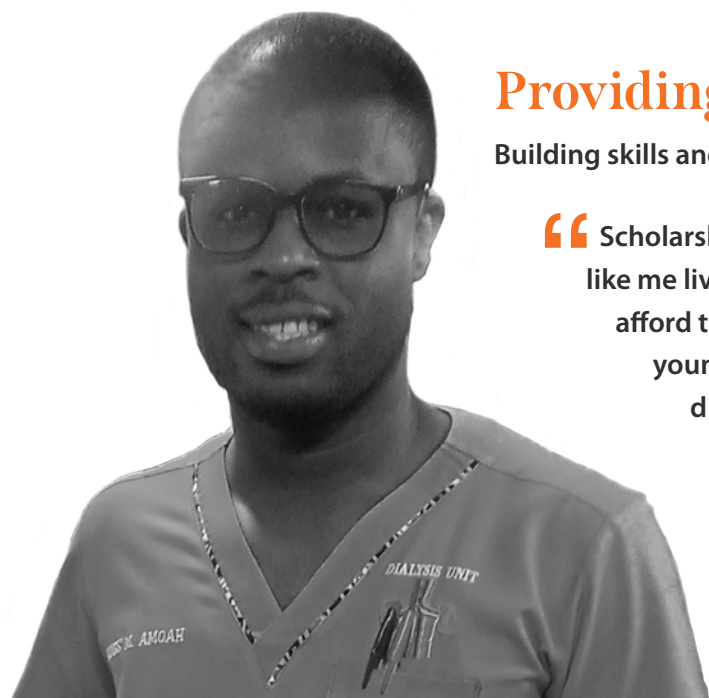
Alongside our scholarship offer, we will create a new Fellowships scheme, providing training and support for the critical first stages of independent research for the most promising international researchers.

Providing scholarships for talented students

Building skills and capacity through world-class training and education

“ Scholarships are very important for many promising young people like me living in lower and middle-income countries who cannot afford to self-finance their education. They can help so many young people, like me, to pursue their dreams and make a difference to communities across the world. ”

James Amoah MSC, Global Health 2022
Recipient of the Global Health Future Leaders Scholarship



LSTM Graduates celebrating during the 2020 annual graduation ceremony.

[Generating] Knowledge

Through the establishment of the Institute in Resilient Health Systems, we aim to examine and understand the complex forces shaping health systems. What makes one leader more successful than another during a public health crisis; how politics, finance and governance shape decisions; and ultimately, the impact of these decisions on the communities they serve.

The Institute will bring together researchers across a range of disciplines, in Liverpool and across the world, to collaborate in answering these complex questions. Our experience in fragile and unstable settings will allow us to apply this knowledge to the most vulnerable health systems of all.

We aim to grow research seed funding to incentivise global, multidisciplinary collaborations and support more disruptive and breakthrough ideas which may be difficult to fund from conventional sources. Our strong track record in follow-on leverage funding means that significant impact can be created from these catalyst investments.

Through research seed funding

Supporting more breakthrough research ideas

“ It can be difficult for early career researchers to make the transition to independent research without financial support. I was awarded The Director’s Catalyst Fund (DCF) which enabled me to expand my research on arboviruses, started during my first postdoctoral position. The DCF provided the means to apply for and secure the Janet Hemingway Fellowship.

I have now secured my first extramurally funded grant in this position which will focus on transmission and control of Rift Valley fever virus in Tanzania. ”

Dr Jennifer Lord
Post-Doctoral Research Assistant

Research Assistant, Issra Bulgasim, plating out a swab.



[Building] Capacity

Our 125 Campaign directs comprehensive investment towards the whole research ecosystem. A cornerstone of this vision is the creation of Global Leaders and Global Fellowships to drive forward the research agenda most critical to their own contexts. We will work with their host and partner institutions to build their organisational capacity, with the aim of levelling up against the biases which inhibit the international competitiveness of researchers in low- and middle-income countries.

As key participants in LSTM's global research community, we will ensure that our Global Leaders and Fellows have the same access to opportunities, irrespective of their location.

Our unique Clinical Trials Management Training Programme provides secondments and mentorship to advance global clinical trials capabilities, including human challenge models pioneered at LSTM.

Developing global scientific leaders

Enabling collaboration which is responsive to the global health agenda

“ I have seen that investing in a single person through a fellowship can have a massive impact. Many scientists benefit in terms of capacity building, but there is also real change on the ground – lives saved - and that started just because one person was funded for a fellowship. ”

Professor Charles Wonji
Reader and Professor in Vector Genetics

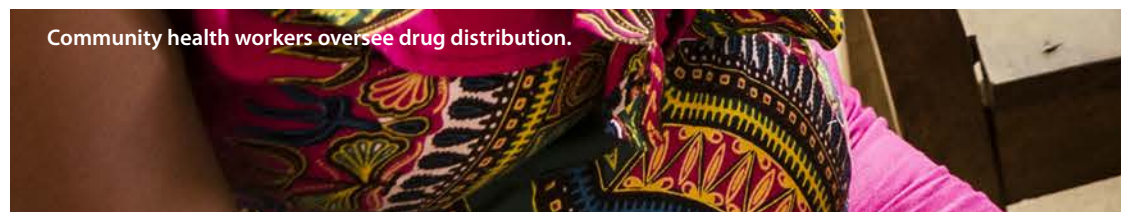




Our £25m fundraising campaign will support £125m investment over 10 years.



Scientific Capacity ↑	Institute in Resilient Health Systems			£5m	
	Research Leadership	PhDs	Fellowships	Senior Research Leaders	£12m
	Seed Funding	Seed and Catalyst Funding (research and partnerships)			£2m
	Education	125 Anniversary Scholarships	Education capacity strengthening		£2m
	Training	Research Management, Systems and Support	Innovation / Spinouts, Incubation	Exec. Ed, CPD	£2m
Infrastructure	CREATOR (Malawi)	Innovation and Training Hub (Liverpool)	Technology Infrastructure		£2m



Community health workers oversee drug distribution.

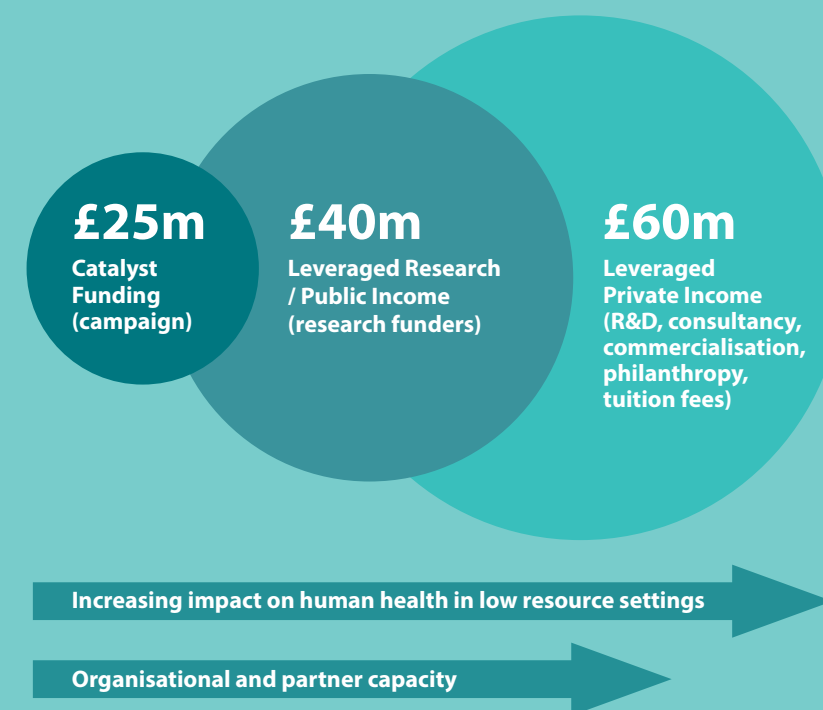
Why your support is so important.

LSTM's 125 Campaign will provide £25m catalyst funding to build institutional and partner capacity, expertise and agility.

This will mean we have greater bandwidth to collectively respond to existing and future health threats facing humanity. Increased research capability means that we and our partners can attract greater investment from research funders.

In turn, this research generates new knowledge which can be directly applied to impact human health. This attracts further investment through industry R&D partnerships, the development of new training programmes, commercialisation and further philanthropy.

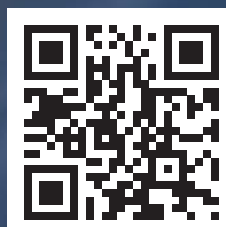
Donations made through our Campaign will amplify LSTM's reach, expertise and impact.



Support from donors enables us to push the boundaries of traditional research and statutory funding. They allow the freedom to develop solutions which will catalyse new knowledge and research funding, ultimately decreasing reliance on aid.

Donations enable us to invest in new, untested, and perhaps unconventional ideas and the most promising students and scientists. These are the people who will lead the world in finding solutions to humanity's biggest health challenges.

Donations allow the flexibility to work with new partners and support them in developing their own research infrastructure and competitiveness. This creates collaborations which are responsive to regional challenges, but which have the potential to benefit human health worldwide.



Scan to find out more



125
YEARS
1898 2023

LSTM
LIVERPOOL SCHOOL
OF TROPICAL MEDICINE

✉ fundraising@lstmed.ac.uk

📍 [lstmed.ac.uk/125](https://www.lstmed.ac.uk/125)

☎ +44 (0)151 702 9449

📍 Liverpool School of Tropical Medicine,
Pembroke Place, Liverpool, L3 5QA

Dr. Fumbani, Dr. Dingase, Dr. Chanizya and Dr. Gordon in Malawi treating COVID-19 patients, wearing PPE paid for with donations from LSTM's Bump It Forward campaign.